

# MYX



DC8-2812ME IQ+

## Features

- 8MP (3840×2160) H.265+ full real time encoding
- 2.8-12mm Motorised Varifocal 34°-97°
- AI Sensor Light - Colour at Night
- AI People & Vehicle Detection
- ICR auto switch, true day/night
- 30~50m IR night view distance
- Built-in microphone
- SD Card Recording up to 256GB
- 3D DNR, digital WDR, Triple Stream
- one-way audio
- PoE or 12VDC power supply
- Supports iPhone, iPad, Android remote monitoring
- IP67 ingress protection



**4K**  
**ULTRA HD**



## Specifications

Image Sensor	1/2.8" CMOS
Resolution	8MP(3840×2160), 2K, 3MP, 1080P, 720P, D1, CIF
Min. Illumination	0.02 lux @F1.6, AGC on; 0 lux with IR
Lens	2.8-12mm Motorised Varifocal 34°-97°
Day & Night	ICR Filter
Video Format	H.265+ / H.265 / H.264+ / H.264 / MJPEG
Main Stream	60Hz: 8MP/2K/3MP/1080P/720P(1~30fps) 50Hz: 8MP/2K/3MP/1080P/720P(1~25fps)
Wide Dynamic	Digital WDR
Image Settings	ROI, Saturation, Brightness, Chroma, Contrast, Wide Dynamic, Sharpen, Noise Reduction
Audio	Internal Mic x1, External Mic input x1
Video Out	na
Smart Alarm	Intelligence Analytics, Motion Alarm
Night Distance	20~30m IR, 20~30m White
Smart IR	Switchable
SD Card Capacity	256 GB
Remote	Browser, CMS Software up to 4 simultaneous users
Protocol	TCP/IP,UDP,DHCP,NTP,RTSP,PPPoE,DDNS,SMTP,FTP
Housing Rating	IP67
Power Supply	DC 12V / 48V PoE
Power Usage	<9.5W with IR on
Operating Env.	-30°~ 40°C, 10%~90% Humidity
Dimensions	Ø 111mm x (H) 99.6mm
Weight	660g

Product specifications and appearance subject to change without notice

## Colour on Event

A white **sensor light** comes on when a human or vehicle is detected to give full colour at night.



## Intelligence Analytics

Get **FAST** search results by configuring in-built **image analytic algorithms**.

Supports Tripwire, Abandoned Object, Missing Object, Video Exception & Intrusion



## People & Vehicle Detection

The IQ+ camera series incorporates **advanced AI** features that can detect and classify **people** and **vehicles**, allowing you to quickly search footage or be alerted via **Push Notifications**



**256GB**  
**SD Card**  
**Recording**

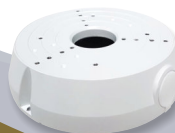


## Mounting Accessories

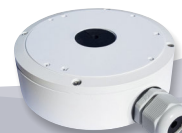
WM-EB



JB-EB



JB-302



LEDGE 1

